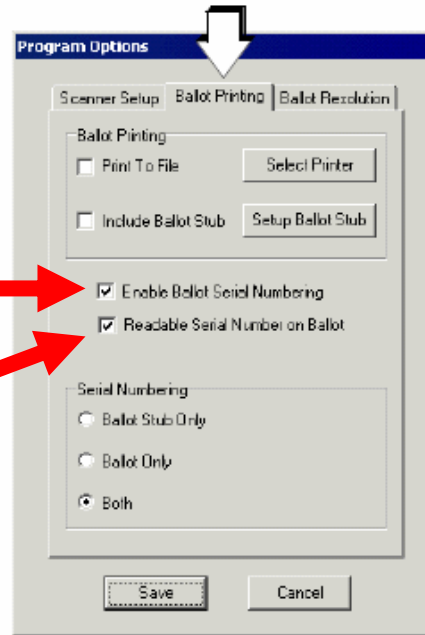


# Information Provided to the Colorado Secretary of State from Hart Intercivic related to System 6.0 Certification Testing.

To enable the **use** of serial numbers on ballots, the operator has to check this box.

To additionally enable the use of a “readable” serial number, the operator would check this box.



**Figure 3-4** Ballot Printing tab in the Program Options window (Serial-number view).

Check Box	Description
<b>Ballot Printing Panel</b>	
Print to File	<input checked="" type="checkbox"/> When checked, causes the ballot(s) to be printed to a file.
Include Ballot Stub	<input checked="" type="checkbox"/> When checked, a ballot stub will be printed on the ballot. NOTE: You must define the information you want included on the ballot stub as described in <b>Ballot Stub</b> window on page 78
Enable Ballot Serial Numbering	<input checked="" type="checkbox"/> When checked: ◆ The <b>Serial Numbering</b> panel appears in the <b>Ballot Printing</b> tab (see <b>Figure 3-5</b> on page 76).
Readable Serial Number on Ballot	NOTE: Cannot be unchecked once ballots have been printed. <input checked="" type="checkbox"/> When checked, a readable, unique serial number will be printed on each paper ballot and/or ballot stub. The starting serial number will be the number defined in the <b>Starting Serial Number</b> field of the <b>Print Ballots</b> window (see <b>Figure 3-11</b> on page 82).

This statement, plus our discussions and testing showed how the various options work for printed ballots and serial numbers.